

QUIZ

WHAT IS YOUR DIAGNOSIS?

Clinical vignette: A 75-year-old female presents for excision of a subcutaneous mass a few centimeters in size, located on her lower back and slowly enlarging for few years. Gross inspection reveals a 3.7 cm well-demarcated subcutaneous tumor with hemorrhagic, tan pink to gray, glistening cut sections.

Histopathological examination shows a predominantly smoothly outlined tumor with somewhat lobular architecture. It is composed of small to medium sized cells with variable cytomorphology arranged in strands, trabeculae, and cribriform nests set in an abundant myxoid stroma (Fig. 1).

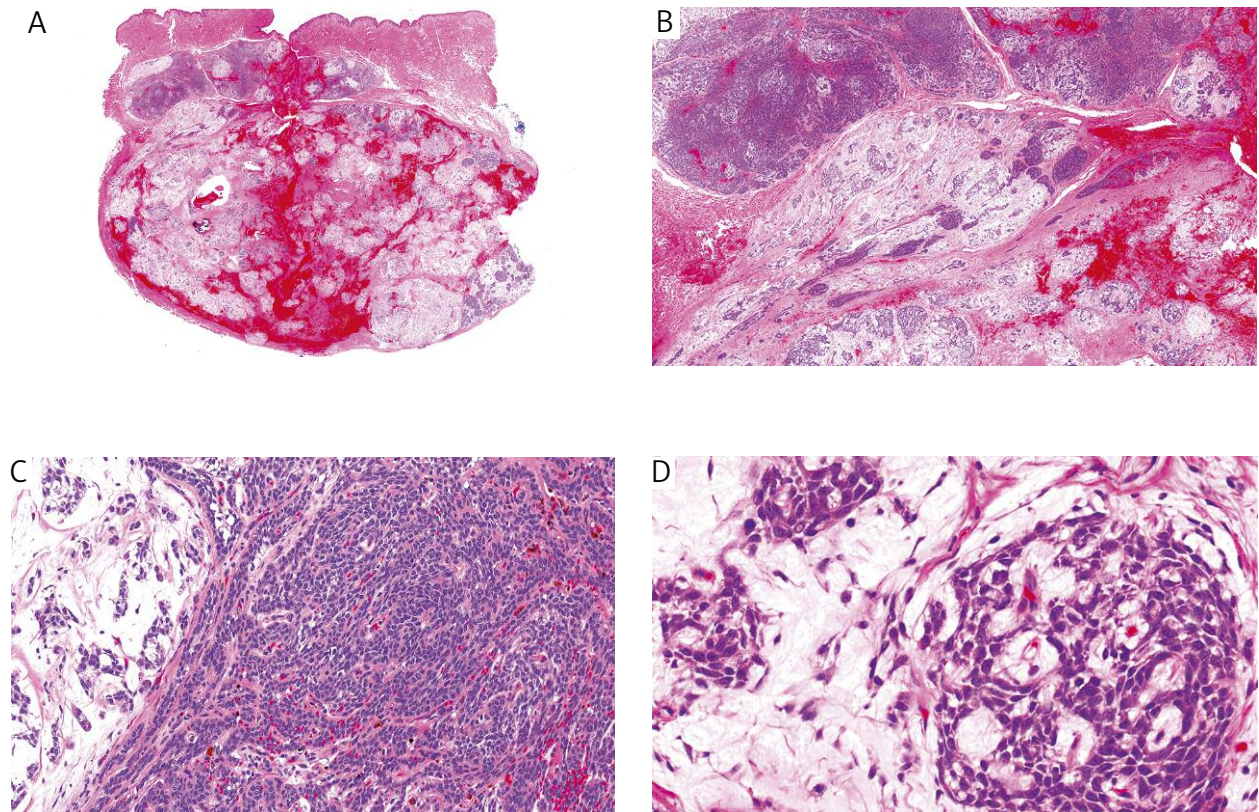


Fig. 1.

Jaroslav Jedrych, John Vu

Department of Dermatology, Dermatopathology Unit, University of Pittsburgh Medical Center, Pittsburgh, USA

Answers should be sent to the Editorial Office by 30.11.2013. The correct answer will be announced in the next issue of the *Polish Journal of Pathology*. All participants with the highest number of correct answers to the quizzes published in vol. 64 (4 issues) will be entered into the prize draw for a book.